

Remote access to ALBA beamline desktops using NoMachine NX



Document version: 1.4

Author: IT Systems – Computing Division

Contents

Remote access to ALBA beamline desktops using NoMachine NX.....	1
Requirements and recommendations	3
Remote access availability at the beamlines	3
Hardware requirements.....	3
Internet connection	3
Configuring the Nomachine Enterprise client in your PC	4
Install the NoMachine Enterprise Client in your PC.....	4
Summary of configuration parameters for Nomachine Enterprise Client.....	4
Step-by-step configuration of the NoMachine Enterprise Client	5
Configuring the connection to the beamline desktop PC.....	8
Establish a connection to the beamline desktop PC.....	9
Troubleshooting and frequently asked questions	16
I don't remember my username or password	17
I get the error " <i>No available sessions</i> " after entering my user and password	17
How do I access the NX settings (display, keyboard, etc...) menu?.....	18
I can only see one of the remote monitors in the beamline	18
I have multiple monitors at my PC, how can I use them all for the remote sessions?	20
I have multiple monitors at my Mac, but the NoMachine session can only use one of them.	21
When trying to connect I get the error " <i>Please upgrade your NoMachine installation to version 6 or later and retry</i> "	22



Requirements and recommendations

Remote access availability at the beamlines

Currently the remote access is only available at the Xaloc beamline (BL13), although we expect to extend it to other beamlines in the future.

As a first step, you should **ask your local contact at the beamline** if you wish to schedule a remote access session. He will inform you about the procedures to follow and any possible safety issues. In case of approval, your access will be enabled for the agreed date.

Hardware requirements

It is recommended you **use at least one high resolution monitor (1920x1200, 24" or bigger)**. The Xaloc beamline workstation uses 3 monitors so ideally you would use 2 or 3 to minimize the amount of horizontal scrolling required for operating the different GUIs.

As for the PC, the NX software is designed to work on computers with minimal hardware resources. Any relatively modern PC (less than 5 years old) should be more than enough, the NX recommendation is at least an Intel Core 2 Duo with 512MB of RAM.

Internet connection

Only a **residential Internet connection (ADSL/Fibre/Cable) with basic speed** is required. During our tests, we were able to successfully operate the beamline at good speed even while using the lowest speed ADSL connection available in Spain (Movistar ADSL Basico with 8 Mbps download and 300 Kbps upload.)

IMPORTANT: The **outgoing access to the port 8080** should be open so that the NX software can connect to ALBA. If your institution has a central firewall restricting outgoing connections, please check with the IT department that they allow outgoing connections to port 8080 of the host remotenx.cells.es.

Configuring the NoMachine Enterprise client in your PC

Install the NoMachine Enterprise Client in your PC

Download the NoMachine Enterprise Client for your OS from the NoMachine website.

There are clients available for Windows, Mac OS X and Linux:

<https://www.nomachine.com/download-enterprise#NoMachine-Enterprise-Client>



NoMachine Enterprise Client

 NoMachine Enterprise Client for Windows

 NoMachine Enterprise Client for Mac OS X

 NoMachine Enterprise Client for Linux

 [Learn more](#)

Installation of the software should be pretty straightforward, just follow their instructions.

Summary of configuration parameters for NoMachine Enterprise Client

Protocol: **NX**

Host: **remotenx.cells.es**

Port: **8080**

Use UDP communication for multimedia data: **No, leave unchecked**

Authentication method: **Password**

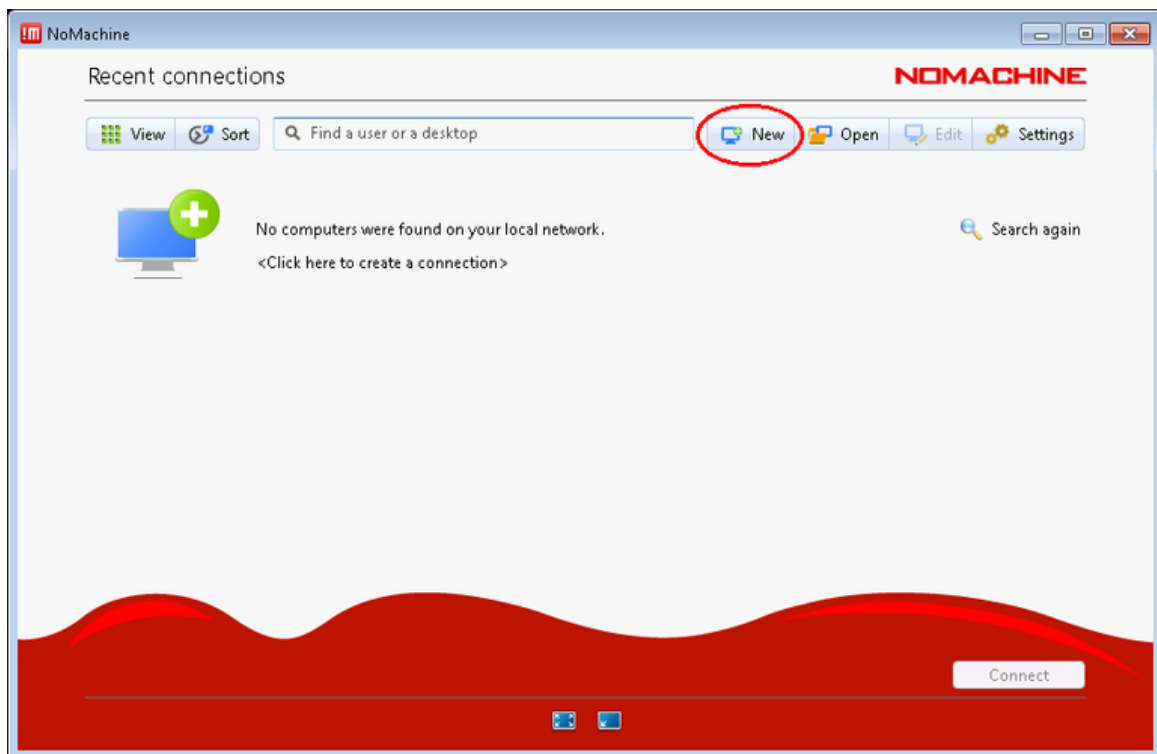
Use HTTP Proxy: **Don't use a proxy**

Connection name: **ALBA remote access**

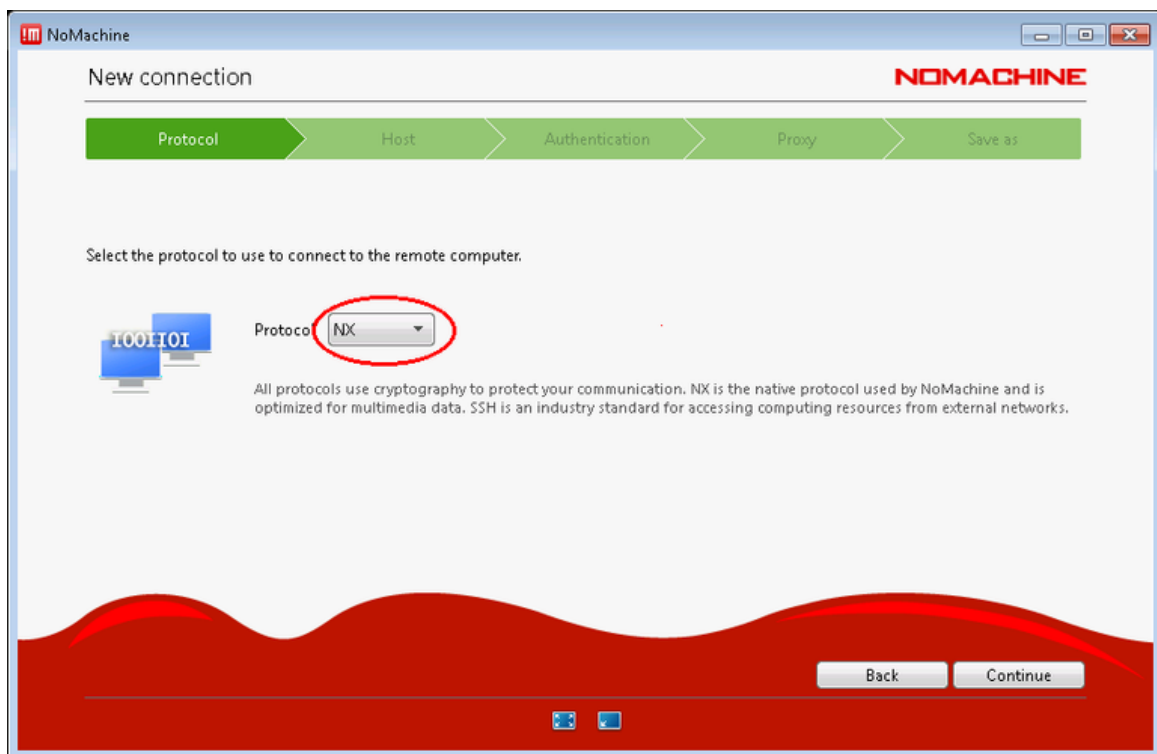
The following pages explain how to configure the client step by step.

Step-by-step configuration of the NoMachine Enterprise Client

1. Start the software and create a new connection:



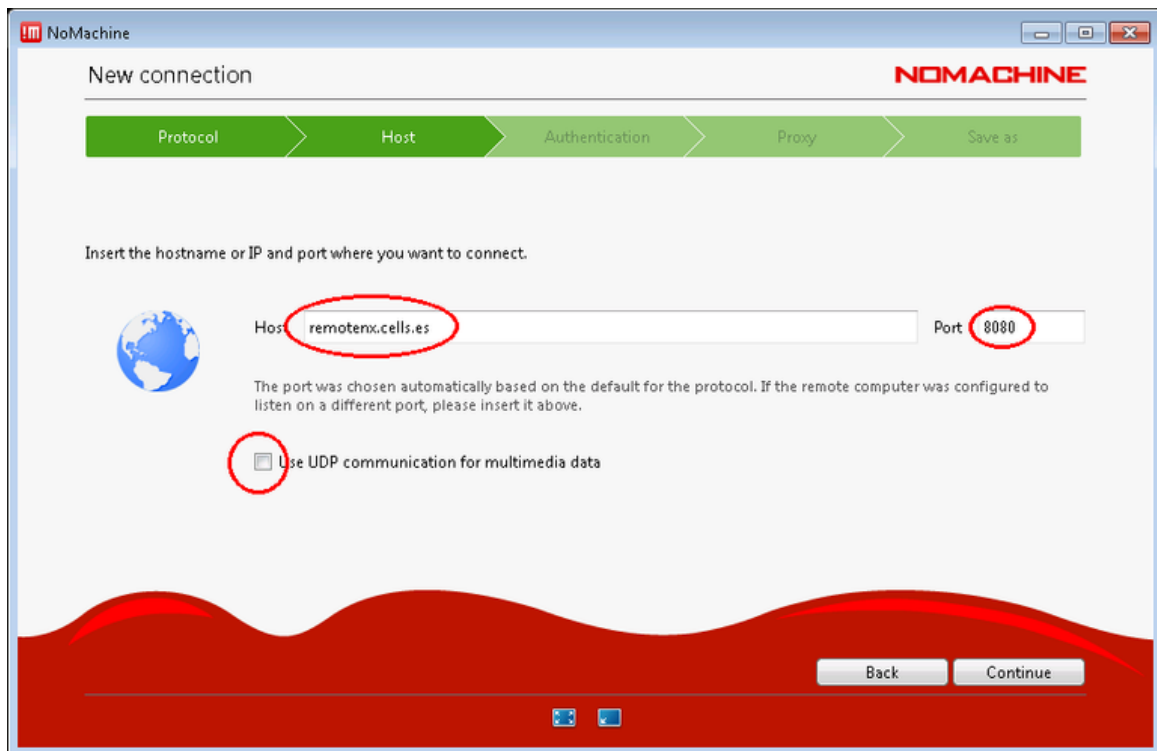
2. Choose NX as the protocol:



3. Choose the following parameters:

- Host: *remotenx.cells.es*

- Port: 8080
- Uncheck the "Use UDP communication for multimedia data".



The image shows the 'New connection' window in the NoMachine application. The window has a title bar with the NoMachine logo and standard window controls. Below the title bar, there is a progress bar with five steps: Protocol, Host, Authentication, Proxy, and Save as. The 'Host' step is currently selected. The main area of the window contains a globe icon, a text field for the host name 'remotenx.cells.es', and a text field for the port '8080'. Below these fields, there is a checkbox labeled 'Use UDP communication for multimedia data' which is currently unchecked. At the bottom right, there are 'Back' and 'Continue' buttons. The bottom of the window features a red decorative wavy border.

NoMachine

New connection

Protocol Host Authentication Proxy Save as

Insert the hostname or IP and port where you want to connect.

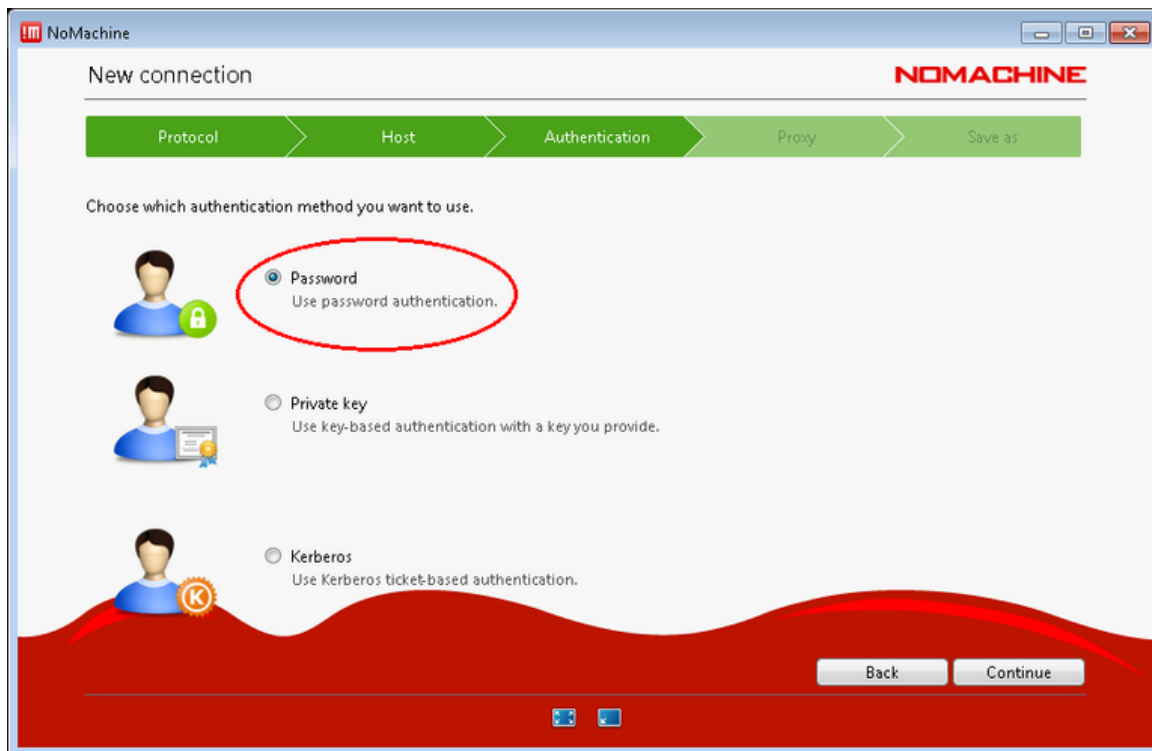
Host: remotenx.cells.es Port: 8080

The port was chosen automatically based on the default for the protocol. If the remote computer was configured to listen on a different port, please insert it above.

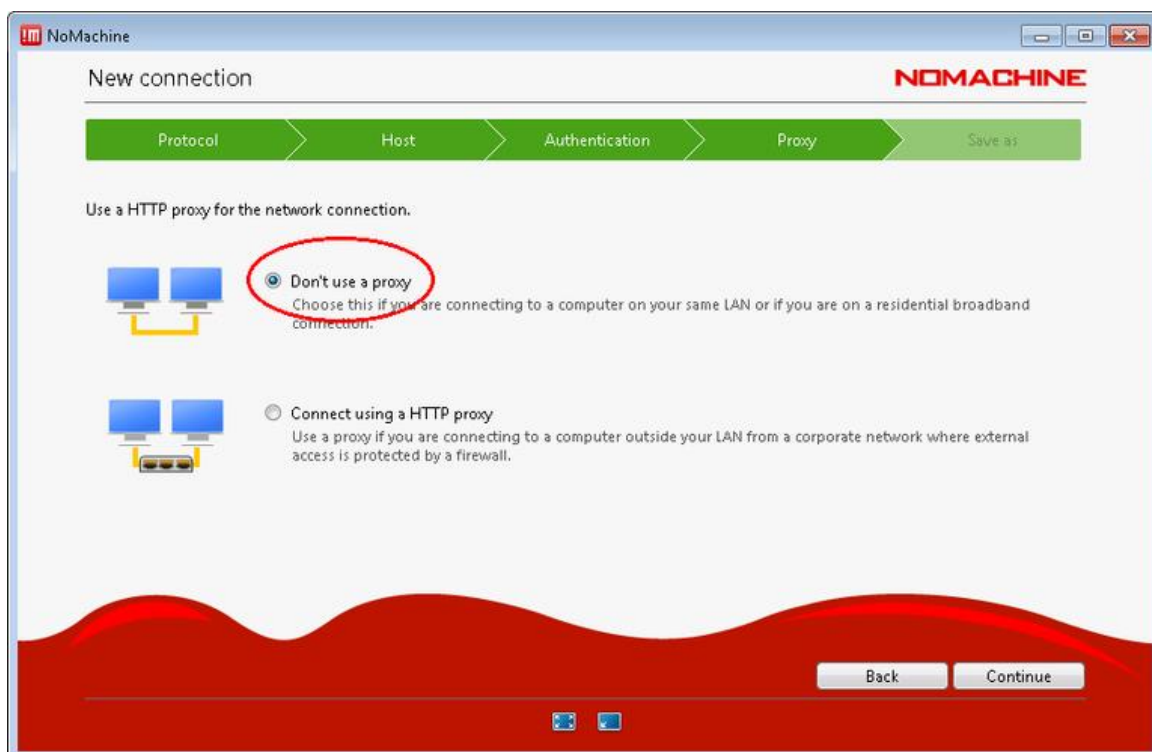
☐ Use UDP communication for multimedia data

Back Continue

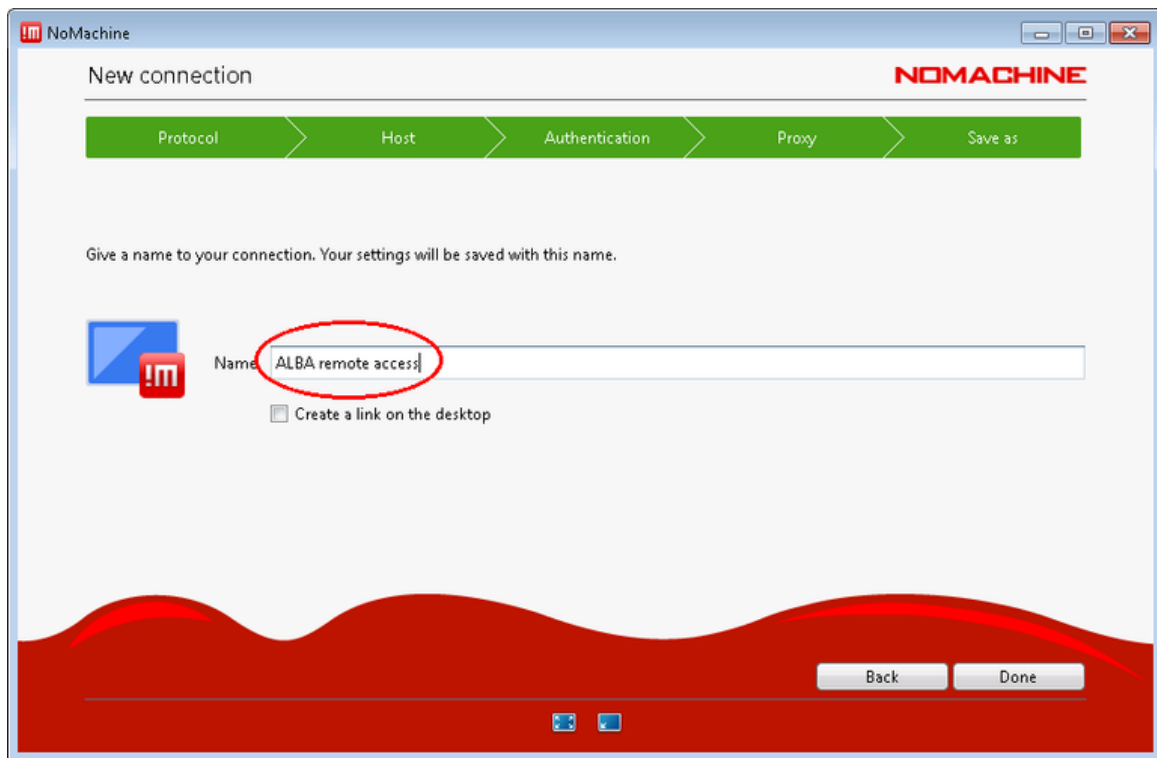
4. Choose "Password" authentication:



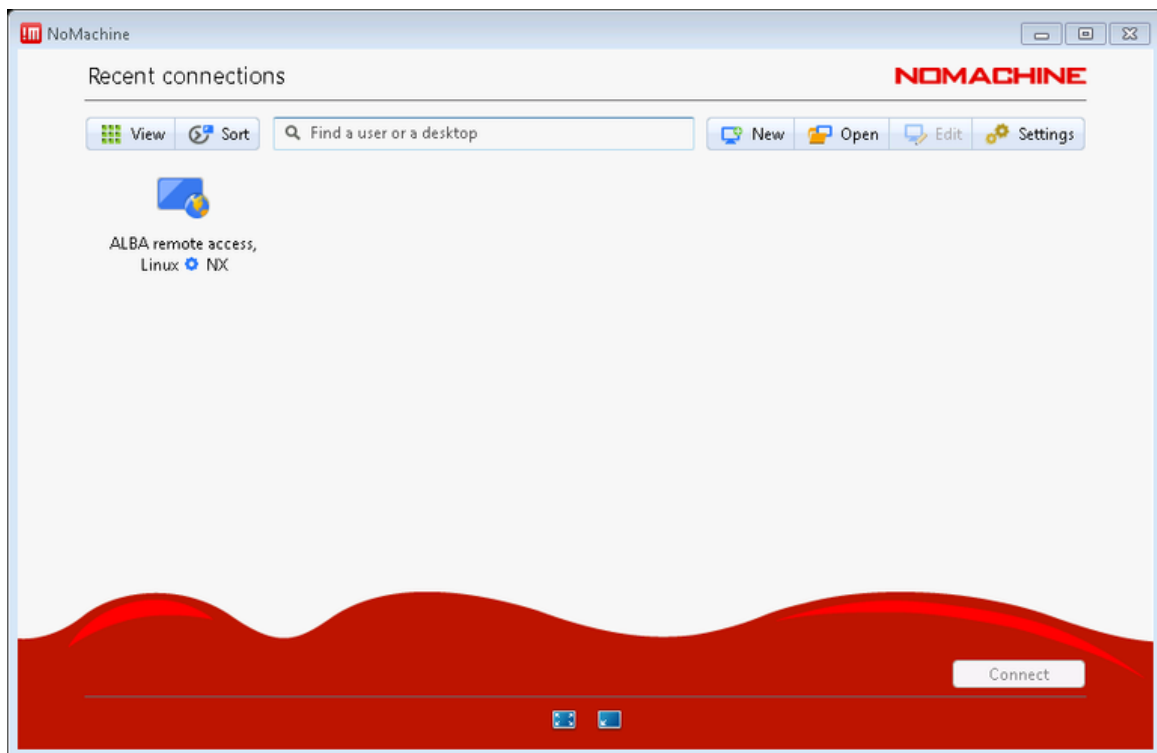
5. Choose "Don't use a proxy" (unless your institution requires a proxy to access the Internet):



6. Finally choose a name for your connection, i.e: *ALBA remote access*:



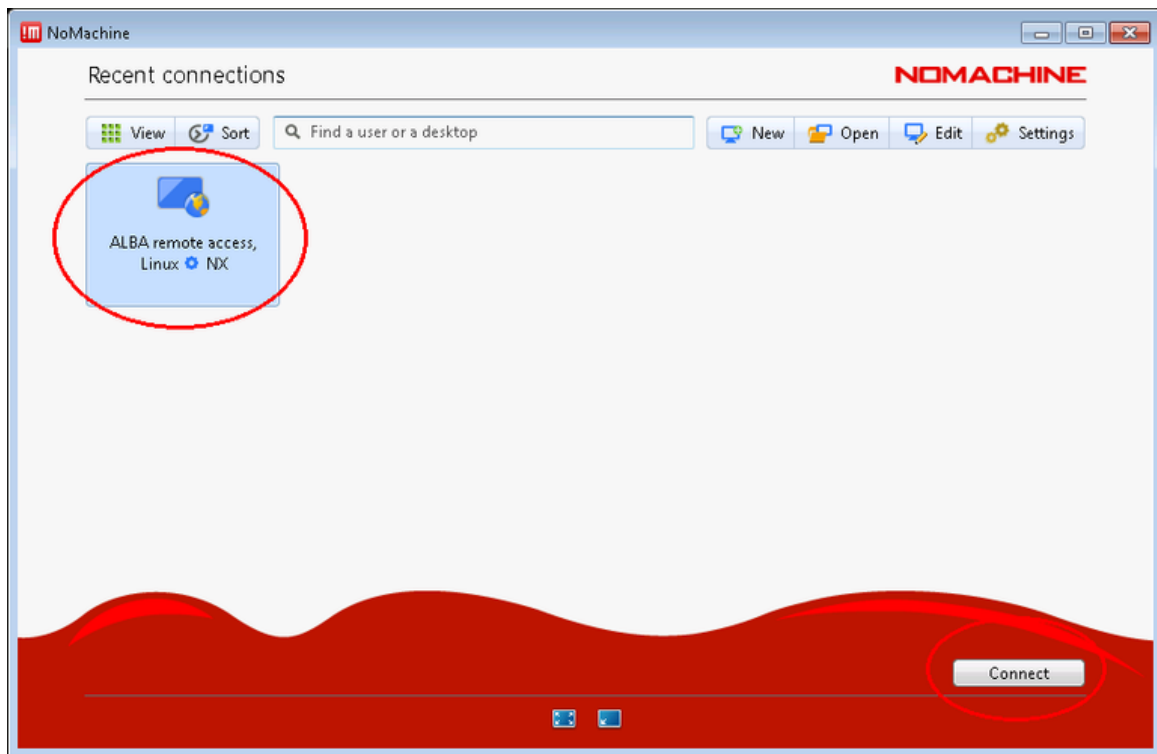
7. Your Nomachine Enterprise client is now configured and the NX connection to ALBA is ready to be used.



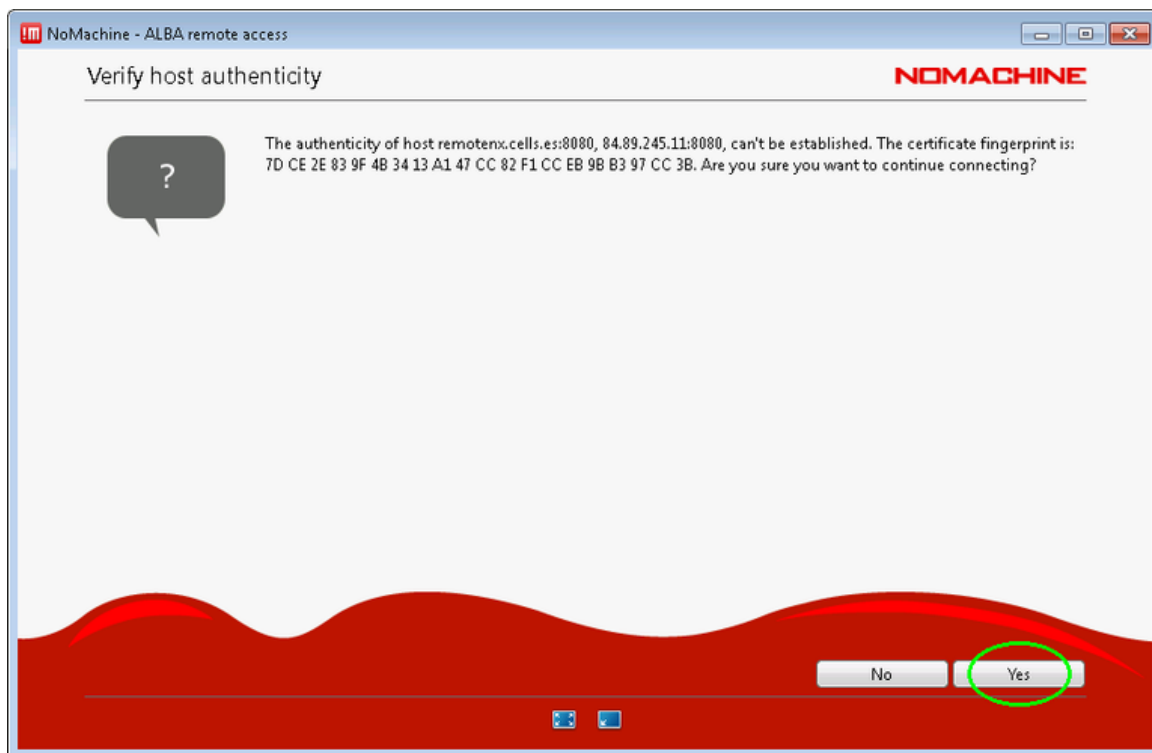
Configuring the connection to the beamline desktop PC

Establish a connection to the beamline desktop PC

1. Start the NoMachine Enterprise Client software on your PC. Click on *ALBA remote access* to select this connection and then click the *Connect* button to continue:



2. On the very first time you use this connection, you will get a prompt for verifying the host authenticity. You can simply click *Yes* to continue.

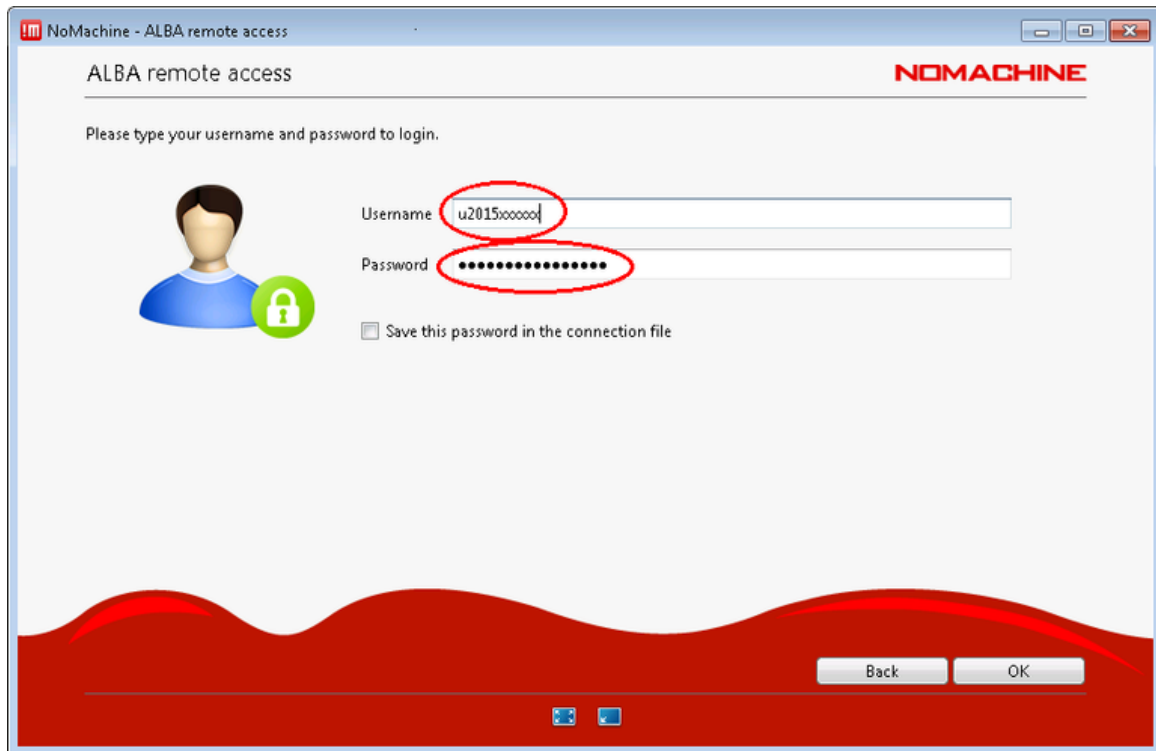


From now on the software will recognize this host fingerprint and you will no longer get the prompt above.

3. Now you should authenticate with your username and password.

Typically, these credentials are provided to you the first time you visit ALBA for an experiment, with the recommendation to set your own password as well. They are the same credentials used to [remotely download your experiment data using SFTP](#).

If you don't remember the username or password, please ask your local contact at the beamline.



The image shows a screenshot of the NoMachine - ALBA remote access login window. The window has a title bar with the NoMachine logo and the text "NoMachine - ALBA remote access". The main content area is titled "ALBA remote access" and contains the instruction "Please type your username and password to login." Below this, there is a user icon and a green lock icon. The "Username" field contains the text "u2015xxxxxx" and the "Password" field contains a series of dots. Both fields are circled in red. There is a checkbox labeled "Save this password in the connection file" below the password field. At the bottom right, there are "Back" and "OK" buttons. The window has a red decorative bar at the bottom.

NoMachine - ALBA remote access

ALBA remote access

NO MACHINE

Please type your username and password to login.

Username u2015xxxxxx

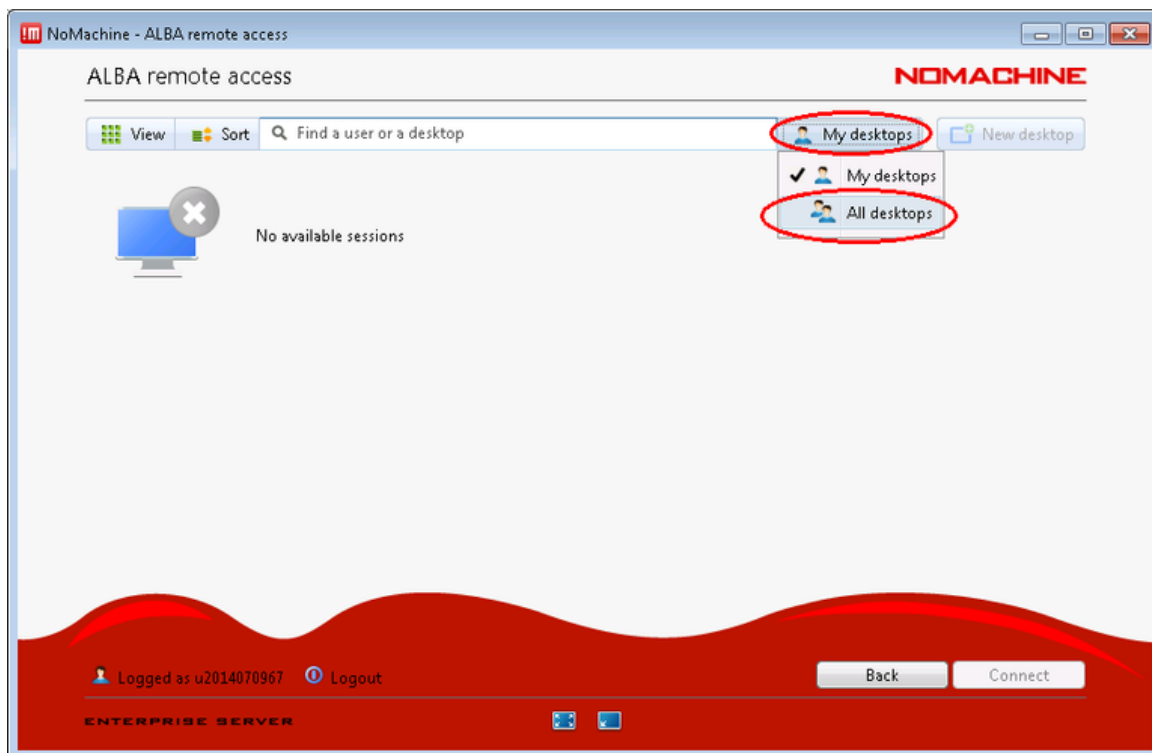
Password

☐ Save this password in the connection file

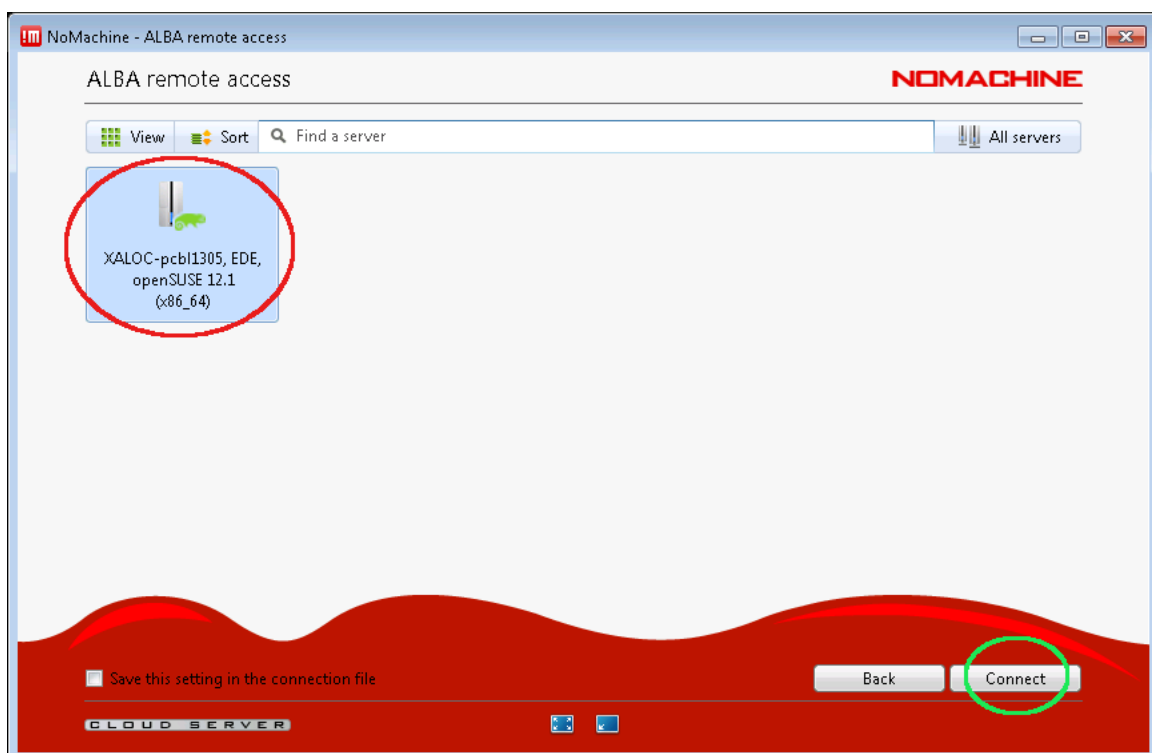
Back OK

4. Now, you should get a screen listing the available *Physical displays*.

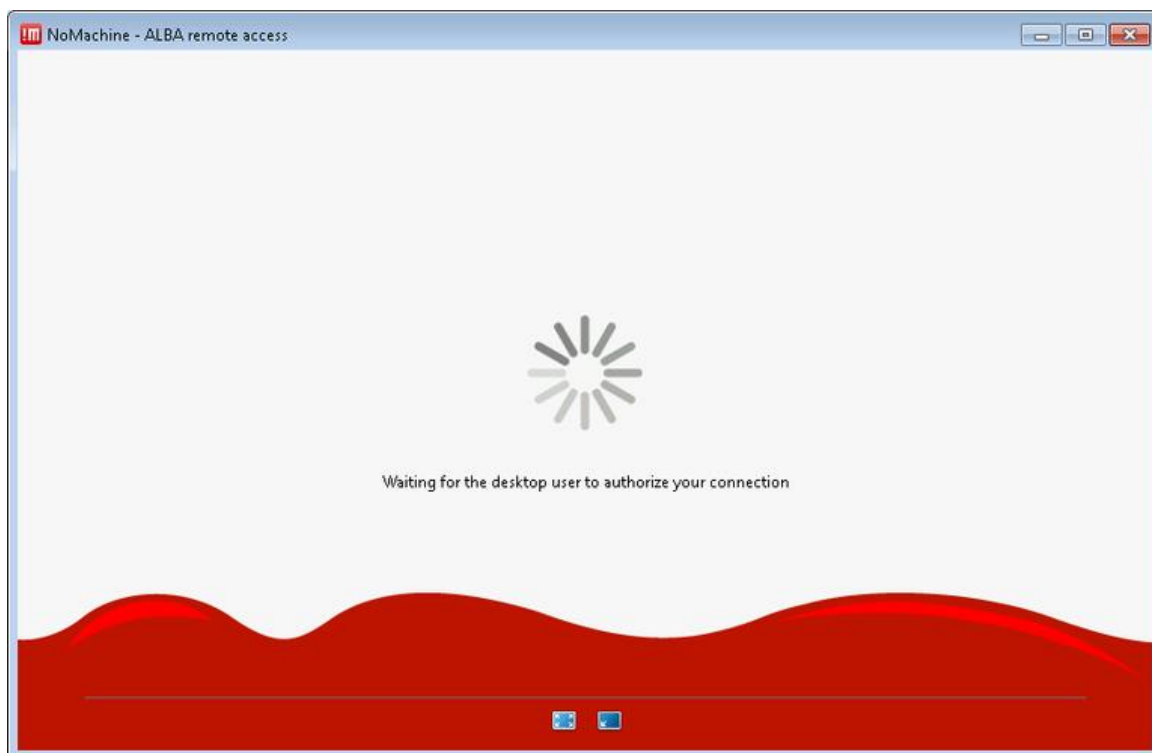
If you don't see any available desktop and instead get a message stating "*No available sessions*", you should change from *My desktops* to *All desktops* at the top-right of the screen:



Now you should be able to locate the Physical display of the beamline PC and connect to it:

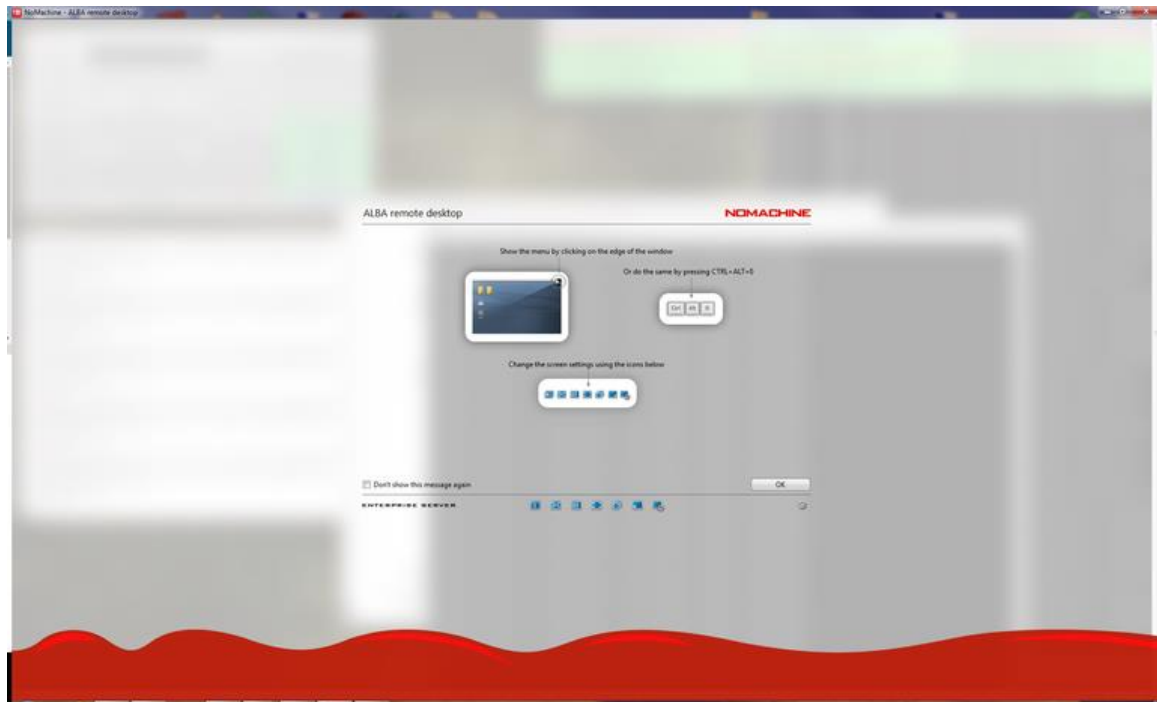


5. After initiating the connection to the Physical display, you will have to wait for the local user running the beamline PC to authorize your connection to join the existing desktop session:



6. Once the current beamline user authorizes the connection, you will be shown the desktop of the beamline PC.

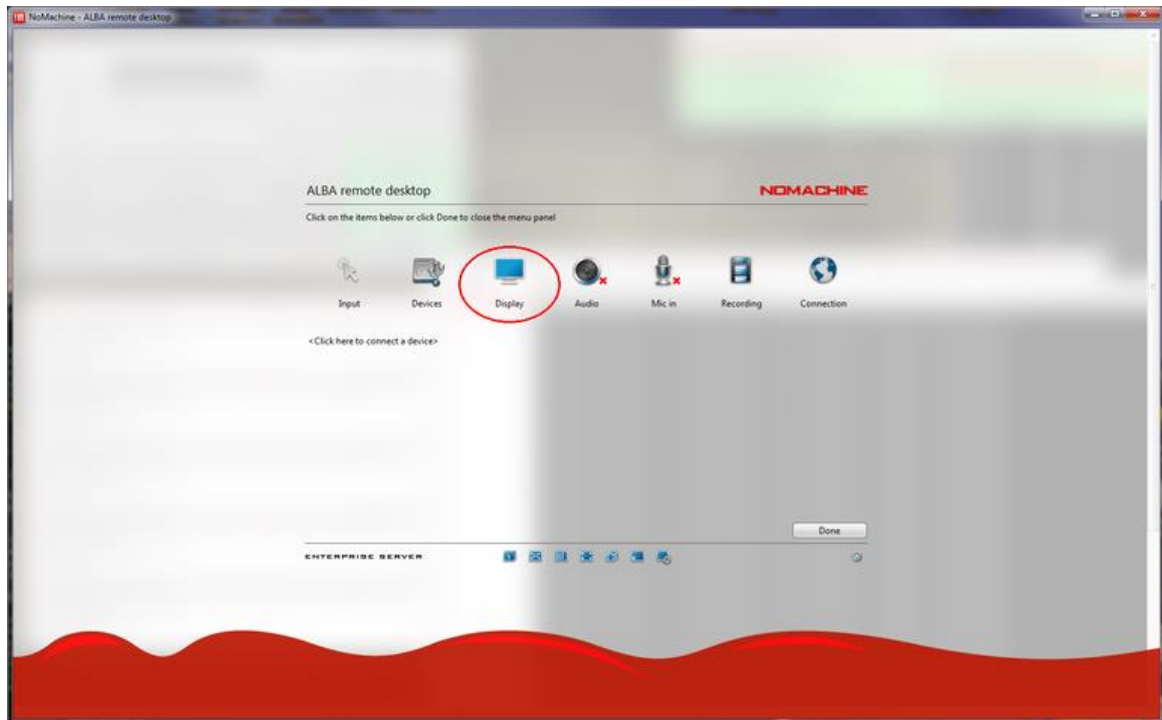
But on the first connection, you will also get a brief tutorial about how the software works, just click on OK:



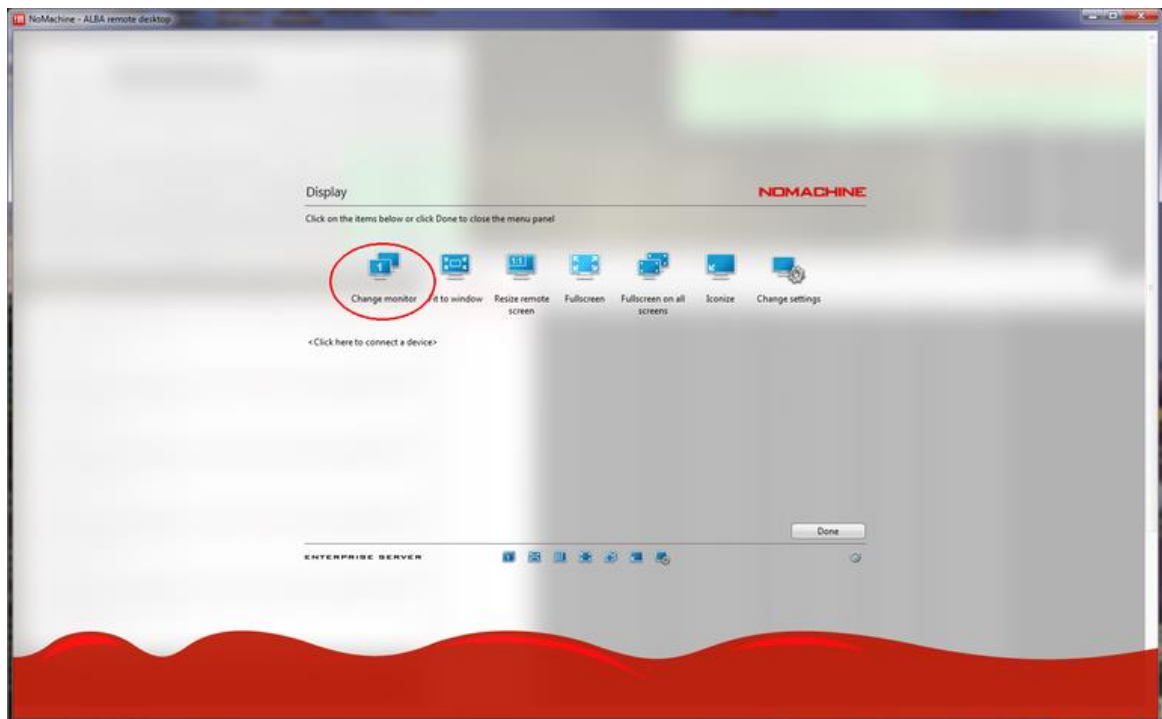
After the tutorial ends, you will get a full view of the desktop in the beamline PC.

7. In case you only see one of the three monitors in the beamline, you should adjust the NX Display settings.

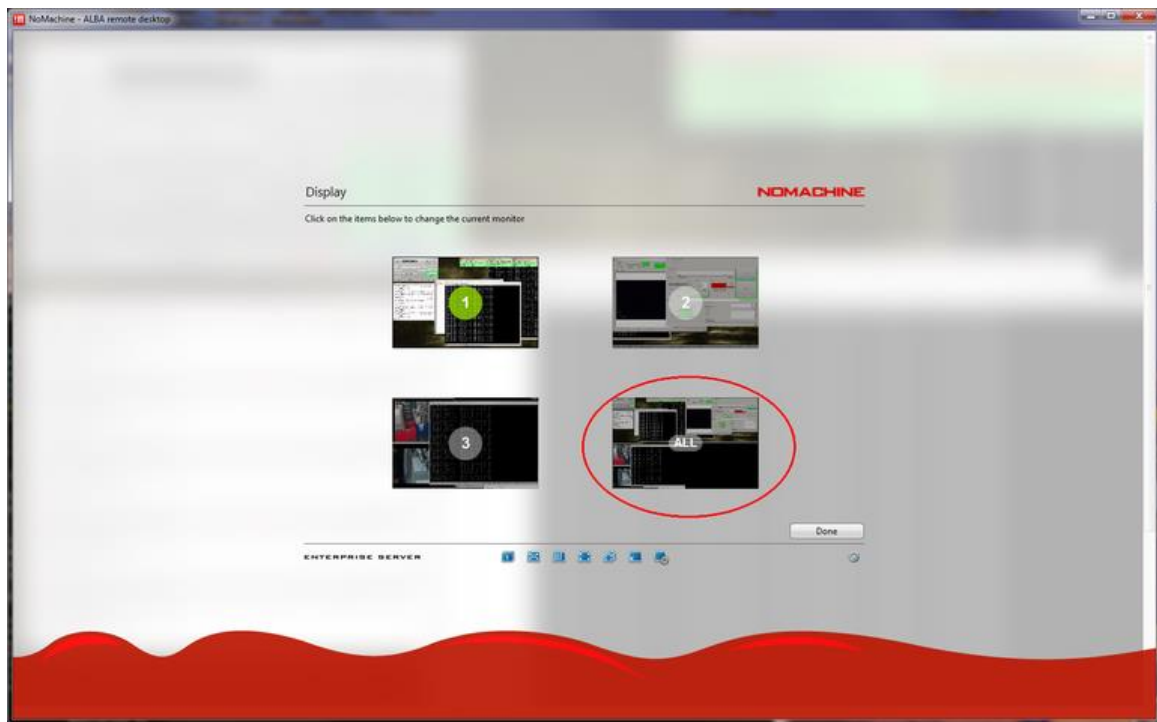
First of all type the keyboard shortcut *CTRL+ALT+0* (number zero) to bring up the NX settings screen, then click on *Display*:



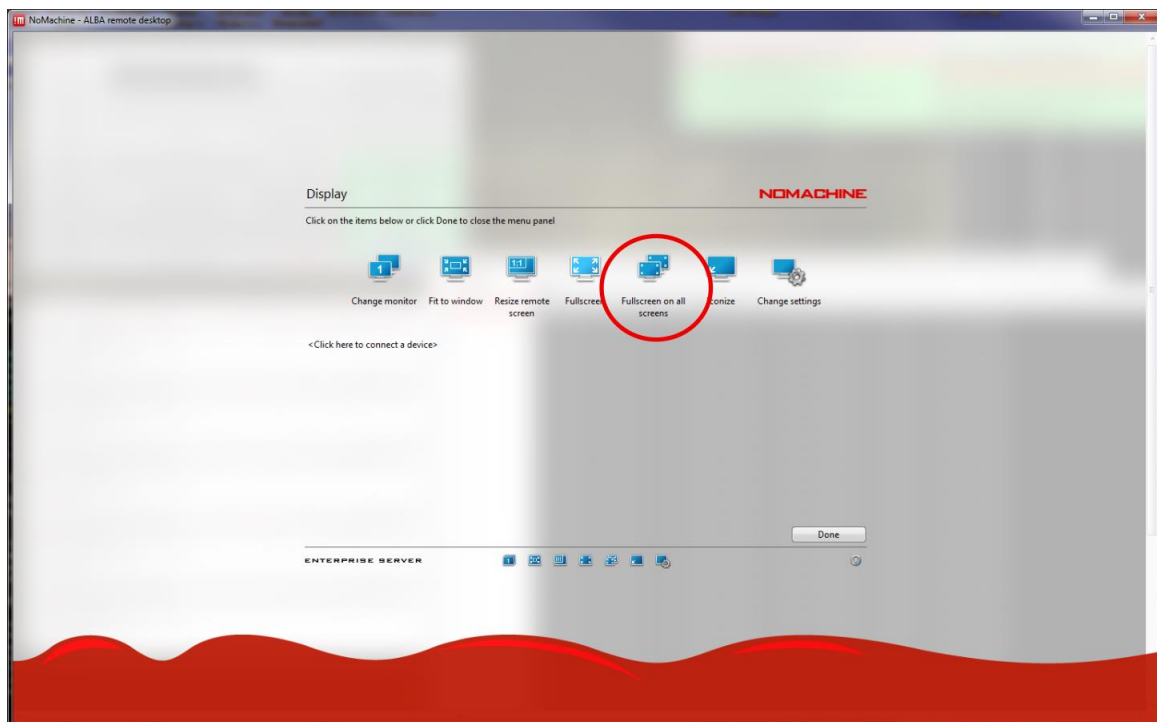
Next go to *Change Monitor*:



And finally choose *ALL* to display all remote monitors in your PC:



In case you have multiple monitors, you should also enable the option *Fullscreen on all screens* in the *Display* menu:



Troubleshooting and frequently asked questions

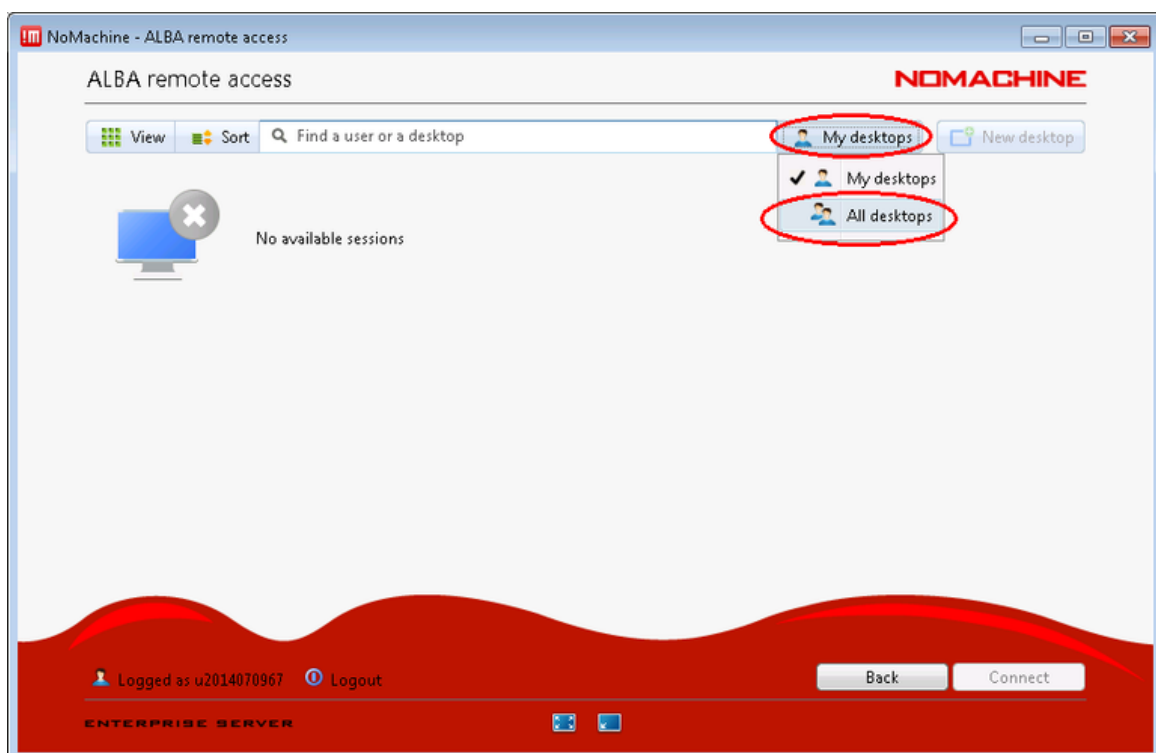
I don't remember my username or password

Your username is the "u" letter plus the <proposalid>, i.e: u2014xxxxxx.

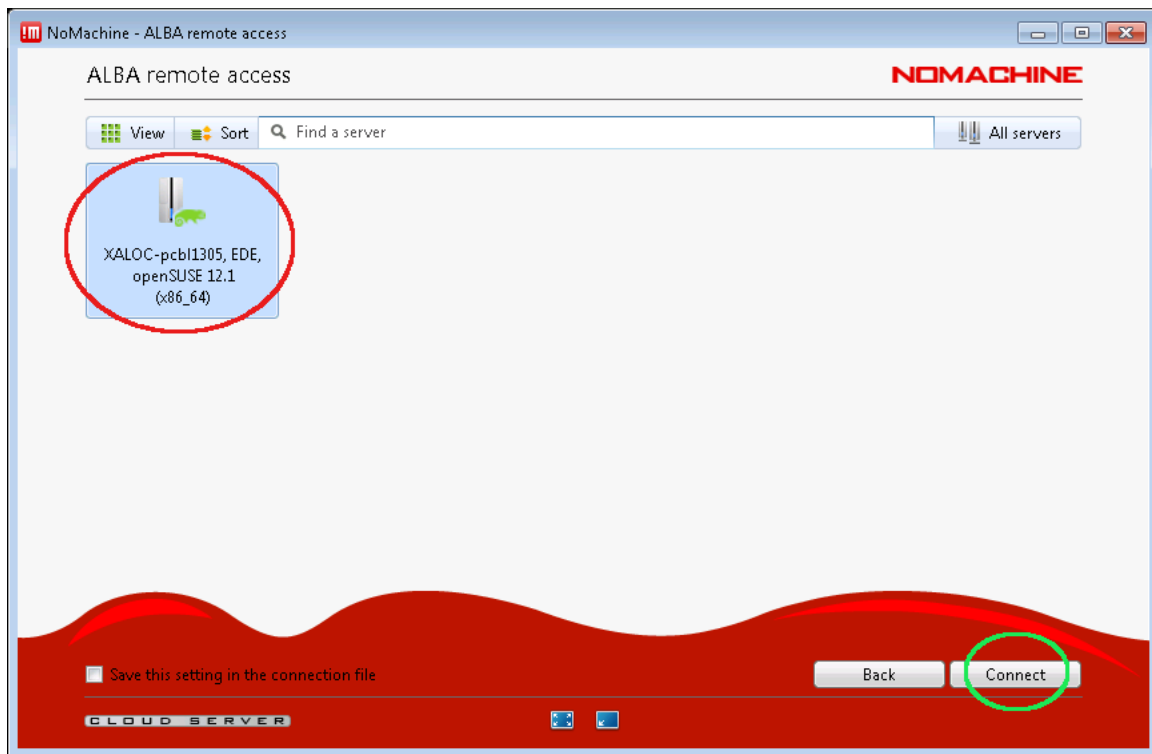
An initial password is typically provided to you the first time you visit ALBA for an experiment, with the recommendation to set your own password as well. If you don't remember the password or need to change it, you can ask your local contact to reset it for you.

I get the error "*No available sessions*" after entering my user and password

If you don't see any available desktop and instead get a message stating "*No available sessions*", you should change from *My desktops* to *All desktops* at the top-right of the screen:



Now you should be able to locate the Physical display of the beamline PC and connect to it:



How do I access the NX settings (display, keyboard, etc...) menu?

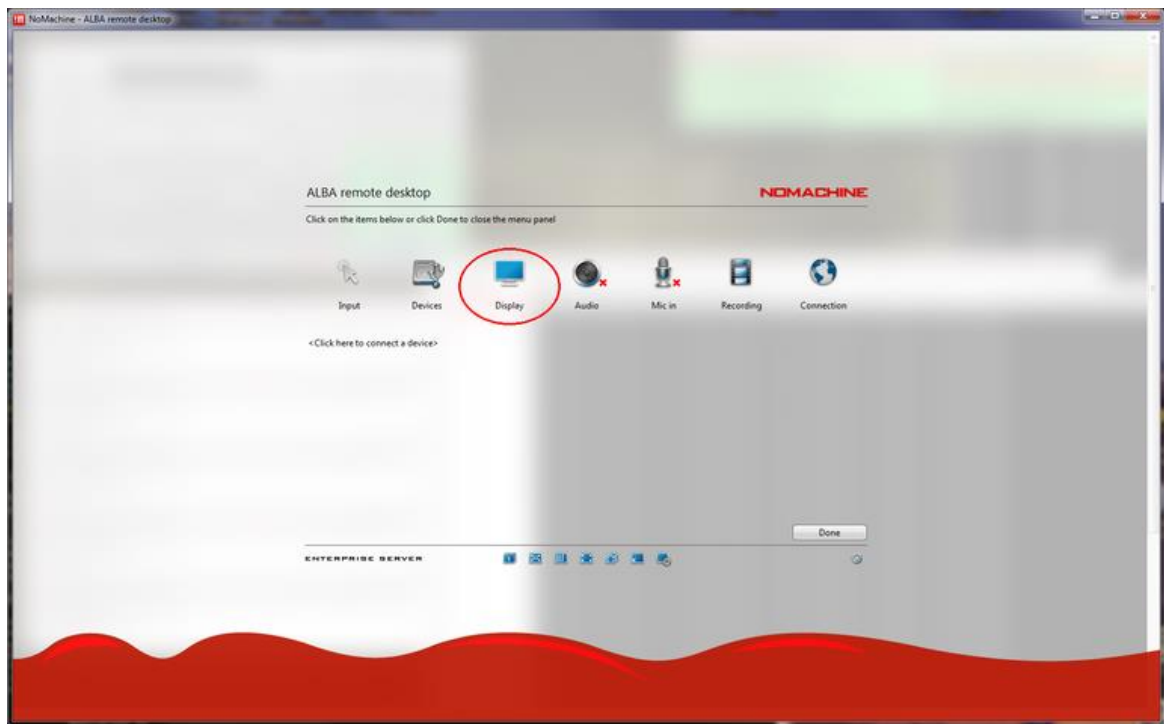
Once the remote session to your desktop is open and running, to access the Menu Panel, enter the key combination **Ctrl+Alt+0** (**Ctrl+Alt+zero**) or move your cursor to the page-peel in the top right-hand corner of the window

You can also check [this Nomachine article describing all the available NX settings in detail](#) .

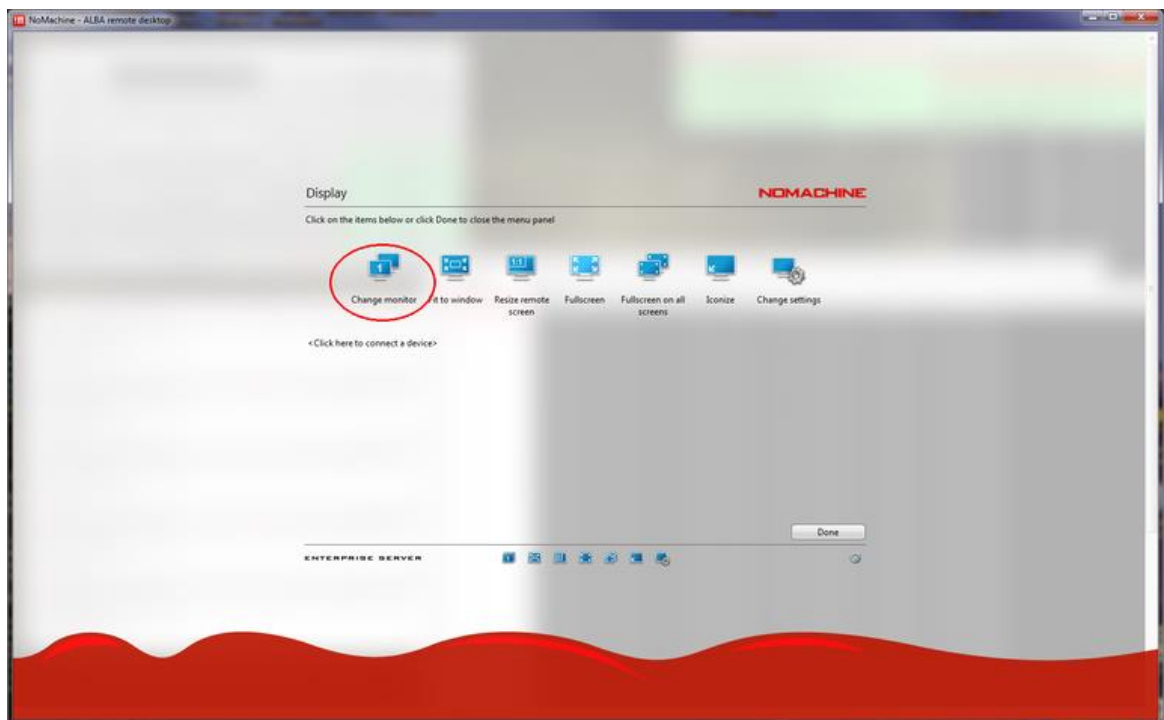
I can only see one of the remote monitors in the beamline

In case you can only see one of the three monitors in the beamline, you should adjust the NX Display settings.

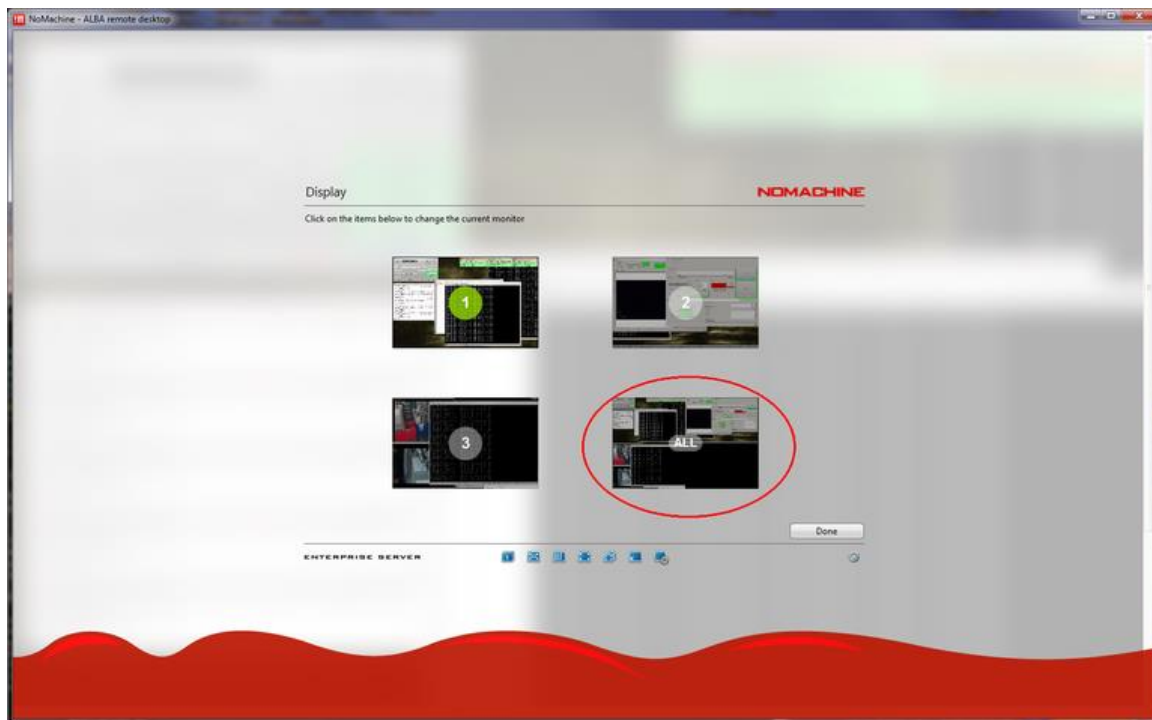
First of all type the keyboard shortcut **CTRL+ALT+0** (**CTRL+ALT+zero**) to bring up the NX settings screen, then click on *Display*:



Next go to *Change Monitor*:



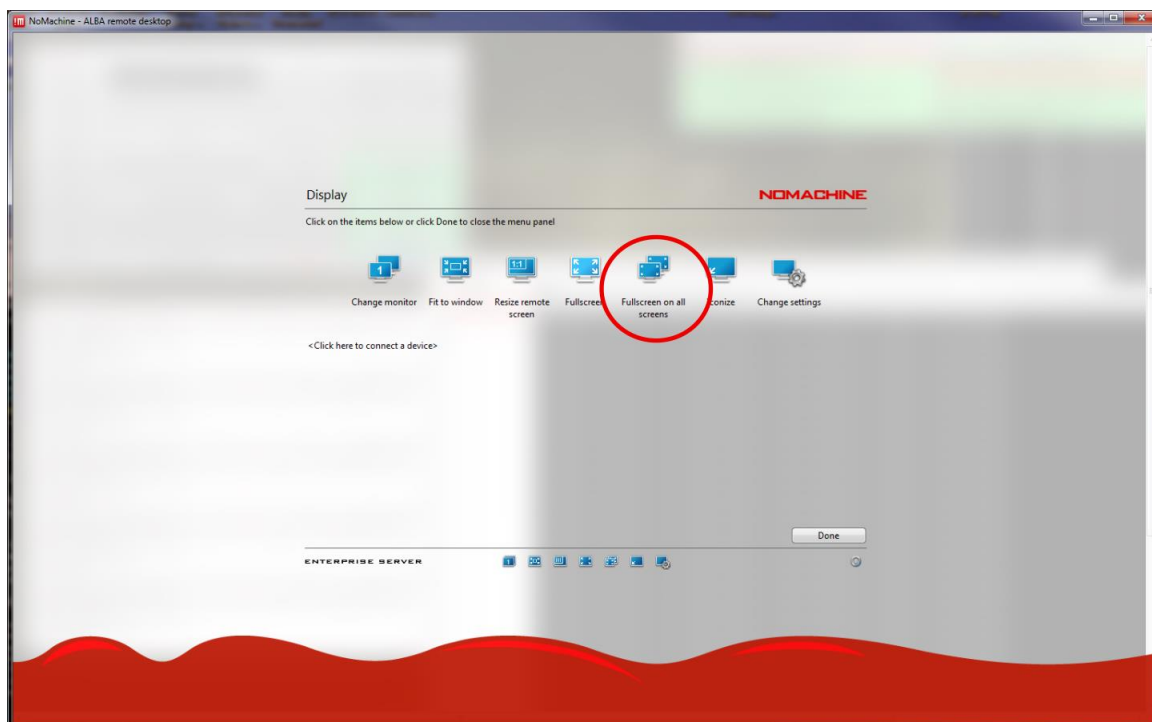
And finally choose *ALL* to display all the remote monitors in your PC:



Once you have configured the view of the three monitors, you can easily switch between them by scrolling horizontally to the edge of the screen.

I have multiple monitors at my PC, how can I use them all for the remote sessions?

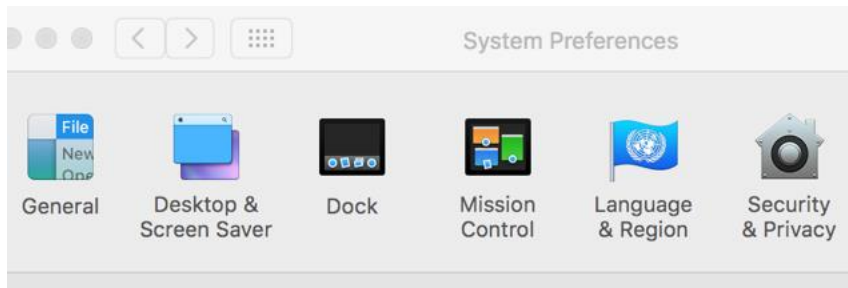
In case you have multiple monitors, you should enable the option *Fullscreen on all screens* in the *Display* menu:



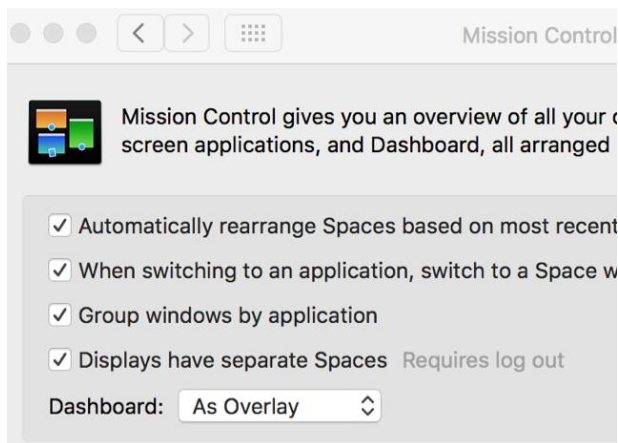
I have multiple monitors at my Mac, but the NoMachine session can only use one of them.

In some computers running Mac OS X, an application window can only use a single monitor by default. This is related to a specific Spaces configuration that you can rearrange following these:

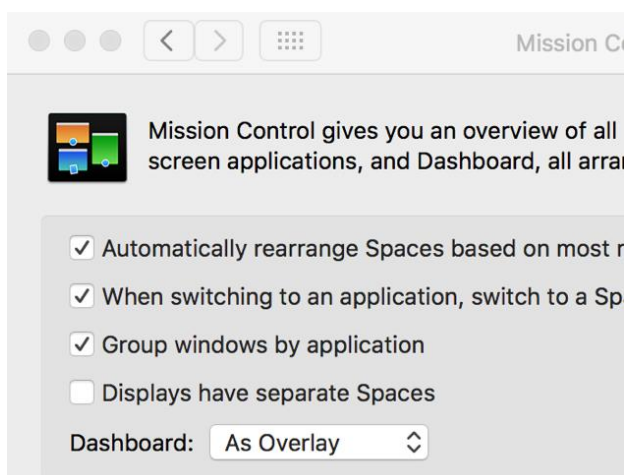
First go to System Preferences / Mission Control



You'll see an option "Displays have separate Spaces" which is checked by default:



You should uncheck this option and leave it like this:



Then proceed to log out and log back in, and you should now be able to use all your local monitors in NoMachine.

When trying to connect I get the error "*Please upgrade your NoMachine installation to version 6 or later and retry*"

In the summer of 2018 we have upgraded the NoMachine server, which now requires the clients to be version 6 or later.

Please download the latest version of the NoMachine Enterprise Client for your OS from the NoMachine website and upgrade it:

<https://www.nomachine.com/download-enterprise#NoMachine-Enterprise-Client>



NoMachine Enterprise Client

 NoMachine Enterprise Client for Windows

 NoMachine Enterprise Client for Mac OS X

 NoMachine Enterprise Client for Linux

 [Learn more](#)

Installation of the software should be pretty straightforward, just follow the onscreen instructions.