

**CONSORCI PER A LA CONSTRUCCIÓ, EQUIPAMENT
I EXPLOTACIÓ DEL LABORATORI DE LLUM DE SINCROTRÓ**

**CONSORCIO PARA LA CONSTRUCCIÓN, EQUIPAMIENTO Y
EXPLOTACIÓN DEL LABORATORIO DE LUZ DE SINCROTRÓN**

REPORT ABOUT 2013 CALL FOR PROPOSALS

**INFORME SOBRE EL RESULTAT DE LA CONVOCATÒRIA
D'ACCÉS AL LABORATORI PER A L'ANY 2013**

**INFORME SOBRE LA CONVOCATORIA DE ACCESO AL
LABORATORIO PARA EL AÑO 2013**



Novembre/Noviembre 2012

SUMMARY

The 2013 call for proposal (deadline 10th October 2012) will allocate beamtime during April-December 2013 (as the period January-March 2013 was already covered by proposals of the 2012 call).

The call for proposals has been a full success with 187 proposals for 7 beamlines.

We define the nationality of the proposal by the home institution country of the main proposer (similar definition for the Autonomous regions in case of Spanish proposals). We have received 187 proposals: 144 from Spain and the rest from European Union Countries (except one from Taiwan). If we consider the Spanish proposals: 42% are Catalan, 22% from Madrid, 11% Aragón, 8% Valencia, 6% Basque Country, 6% Andalucía, and the rest come from Canary Island, Galicia, Baleares, Murcia and Cantabria. If we also consider co-proposers, the main percentages do not vary but the small percentages change a bit and some other CC.AA. (Autonomous regions) like Asturias also appear in the list.

The beamlines with more proposals are XALOC (protein crystallography) and MSPD (Powder Diffraction, material science). The beamlines with more demanded shifts for 2013 are MSPD and BOREAS (circular dichroism). Nearly 250 research groups and more than 600 individual users have applied for beamtime in this call for proposals.

The Evaluation procedure has started and shall be based on the following criteria:

- Technical criteria (whether the experiment is technically feasible in the proposed experimental beamlines or not).
- Scientific quality criteria (by an Evaluation Panel of well-renowned members of the International Scientific Community).
- Safety criteria.

All the details about the call for proposal and the evaluation procedure have been published in the Alba User Office web page:

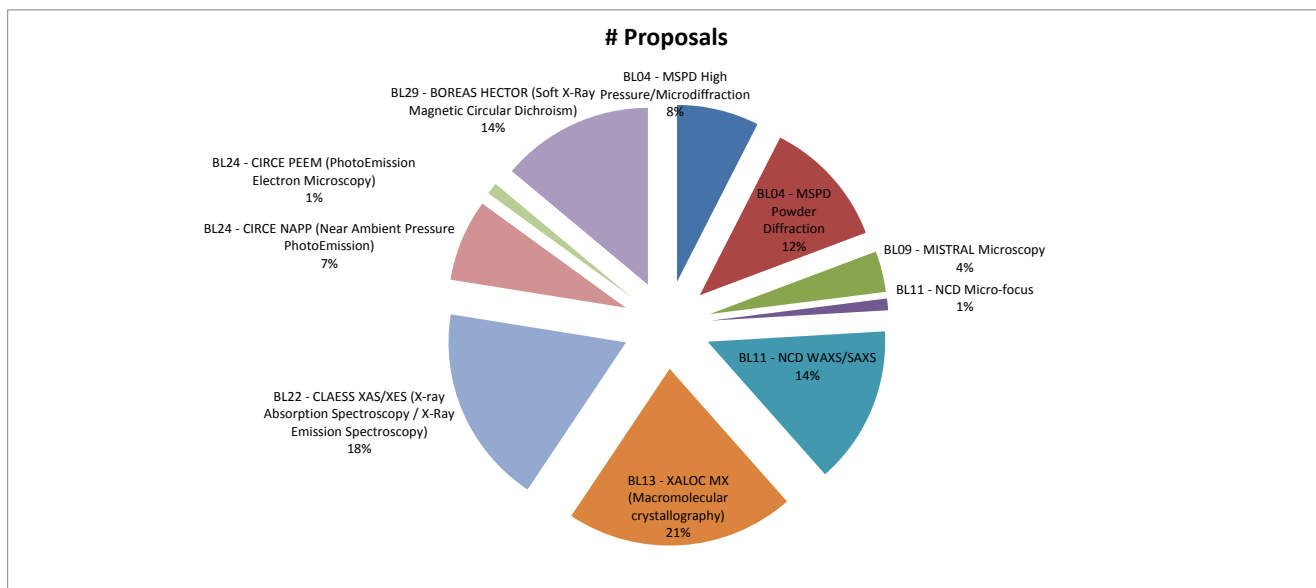
<https://useroffice.cells.es>

<http://useroffice.cells.es/staticpage/contentid/1>

1. Statistical Results about 2013 Call: Proposals and requested shifts by beamlines/endstations

Beamlines/Endstations	# Proposals	% Proposals
BL04 - MSPD	36	19,25%
High Pressure/Microdiffraction	14	7,49%
Powder Diffraction	22	11,76%
BL09 - MISTRAL	7	3,74%
Microscopy	7	3,74%
BL11 - NCD	29	15,51%
Micro-focus	2	1,07%
WAXS/SAXS	27	14,44%
BL13 - XALOC	39	20,86%
MX (Macromolecular crystallography)	39	20,86%
BL22 - CLAEES	33	18,18%
XAS/XES	33	18,18%
BL24 - CIRCE	16	8,56%
NAPP (Near Ambient Pressure PhotoEmission)	14	7,49%
PEEM (PhotoEmission Electron Microscopy)	2	1,07%
BL29 - BOREAS	26	13,90%
HECTOR (Soft X-Ray Magnetic Circular Dichroism)	26	13,90%
Grand Total	186	100,00%

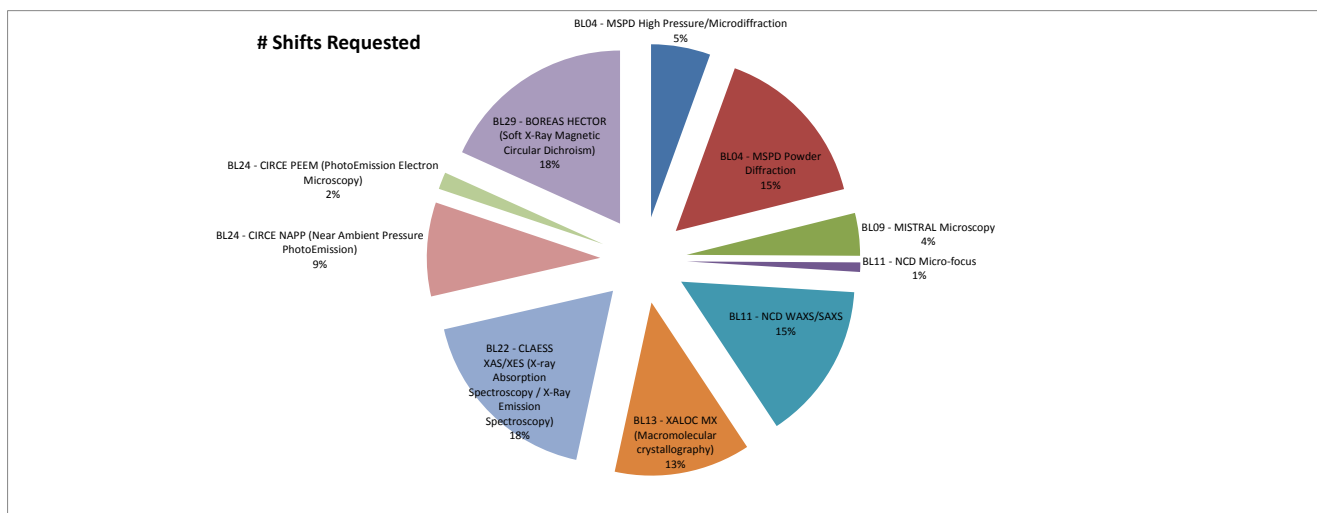
Table I. Proposals by beamlines/endstations. **Note.** 166 proposals are new proposals and 20 proposals are re-submitted proposals (proposals in the waiting list which have re-submitted again the same scientific case).



Picture 1. Proposals by beamline/endstation.

Beamlines/Endstations	Requested # Shifts	% Requested Total Shifts	% Requested shifts (%endstation for BL)
BL04 - MSPD	477	21,11%	21,11%
High Pressure/Microdiffraction	125	5,53%	26,21%
Powder Diffraction	352	15,58%	73,79%
BL09 - MISTRAL	90	3,98%	3,98%
Microscopy	90	3,98%	100,00%
BL11 - NCD	353	15,62%	15,62%
Micro-focus	20	0,88%	5,67%
WAXS/SAXS	333	14,73%	94,33%
BL13 - XALOC	287	12,70%	12,70%
MX (Macromolecular crystallography)	287	12,70%	100,00%
BL22 - CLAEES	407	18,01%	18,01%
XAS/XES	407	18,01%	100,00%
BL24 - CIRCE	234	10,35%	10,35%
NAPP (Near Ambient Pressure PhotoEmission)	198	8,76%	84,62%
PEEM (PhotoEmission Electron Microscopy)	36	1,59%	15,38%
BL29 - BOREAS	412	18,23%	18,23%
HECTOR (Soft X-Ray Magnetic Circular Dichroism)	412	18,23%	100,00%

Table II. Requested shifts by beamline/endstation.



Picture 2. Requested shifts by beamline/endstation.

Comparing 2012 and 2013 (note: microfocus endstation was not available in 2012): a) users have been more conservative asking for shifts (after the 2012 experience where they requested too many and were reduced after review; b) number of proposals are quite similar except at MISTRAL and CIRCE Beamlines.

Beamlines/Endstations	2013 Proposals	2012 Proposals
BL04 - MSPD	36	34
High Pressure/Microdiffraction	14	10
Powder Diffraction	22	24
BL09 - MISTRAL	7	17
Microscopy	7	17
BL11 - NCD	29	22
Micro-focus	2	0
WAXS/SAXS	27	22
BL13 - XALOC	39	49
MX (Macromolecular crystallography)	39	49
BL22 - CLAESS	33	26
XAS/XES	34	26
BL24 - CIRCE	16	29
NAPP (Near Ambient Pressure PhotoEmission)	14	14
PEEM (PhotoEmission Electron Microscopy)	2	15
BL29 - BOREAS	26	26
HECTOR (Soft X-Ray Magnetic Circular Dichroism)	26	26
Grand Total	186	203

Table III. Comparison of Submitted proposals.

Beamlines/Endstations	2013 Requested shifts	2012 Requested shifts
BL04 - MSPD	477	329
High Pressure/Microdiffraction	125	97
Powder Diffraction	352	232
BL09 - MISTRAL	90	175
Microscopy	90	175
BL11 - NCD	353	222
Micro-focus	20	0
WAXS/SAXS	333	222
BL13 - XALOC	287	365
MX (Macromolecular crystallography)	287	365
BL22 - CLAESS	407	382
XAS/XES	407	382
BL24 - CIRCE	234	498
NAPP (Near Ambient Pressure PhotoEmission)	198	219
PEEM (PhotoEmission Electron Microscopy)	36	279
BL29 - BOREAS	412	482
HECTOR (Soft X-Ray Magnetic Circular Dichroism)	412	482

Table IV. Comparison of Requested shifts

2. Countries and CC.AA. participating in this call

For this 2013 call, considering main proposer + co-proposers:

- Total number of researchers submitting proposals: 603. The countries can be seen in Table V.
- For the Spanish proposers, the distribution by CC.AA. are shown in table VI.

Countries	# Proposers	% Proposers
FINLAND	2	0,33%
FRANCE	6	1,00%
GERMANY	31	5,14%
GREECE	12	1,99%
ITALY	34	5,64%
NETHERLANDS	5	0,83%
NORWAY	1	0,17%
POLAND	4	0,66%
PORTUGAL	11	1,82%
RUSSIAN FEDERATION	5	0,83%
SERBIA AND MONTENEGRO	6	1,00%
SLOVAKIA	4	0,66%
SPAIN	467	77,45%
SWEDEN	1	0,17%
TAIWAN	2	0,33%
UKRAINE	1	0,17%
UNITED KINGDOM	9	1,49%
UNITED STATES	2	0,33%
All co-proposers Total	603	100,00%

Table V

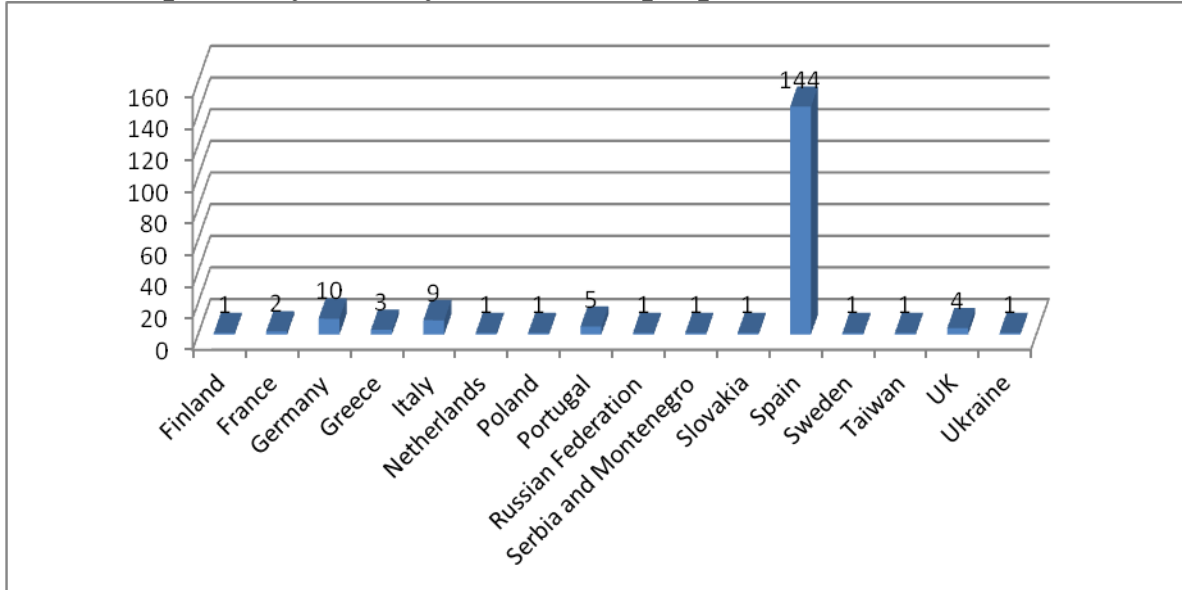
CC.AA.	# Proposers	% Proposers
Andalucía	27	5,78%
Aragón	57	12,21%
Asturias	5	1,07%
Balears	4	0,86%
Canarias	26	5,57%
Cantabria	7	1,50%
Catalunya	169	36,19%
Comunitat Valenciana	50	10,71%
Galicia	2	0,43%
Madrid	97	20,77%
Murcia	7	1,50%
País Vasco	16	3,43%
All Spanish co-proposers Total	467	100,00%

Table VI

3. Proposals by nationalities and CC.AA.

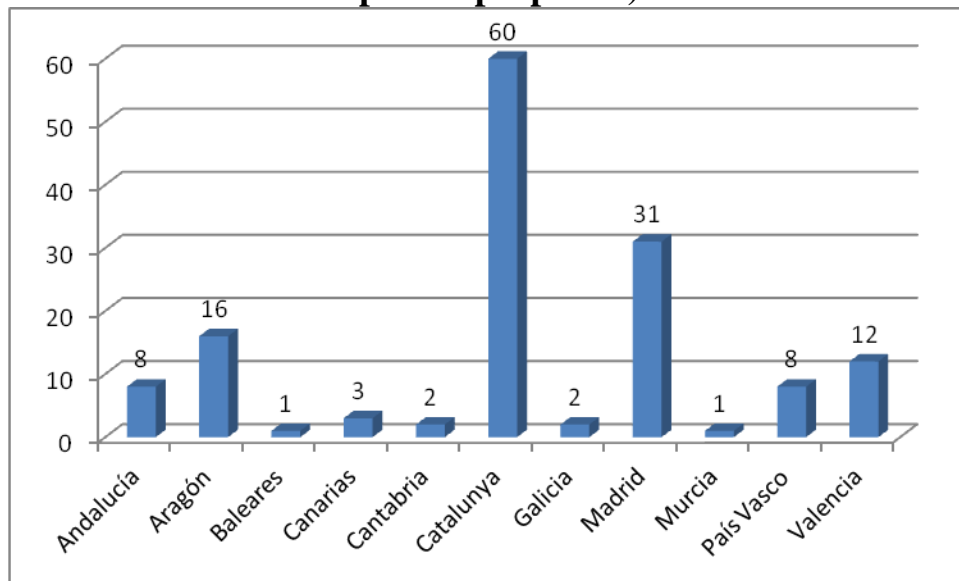
We only use the Home Institution of the main proposer to define the nationality (or Autonomous region in case of Spanish proposals).

Proposals by country of the main proposer home institution



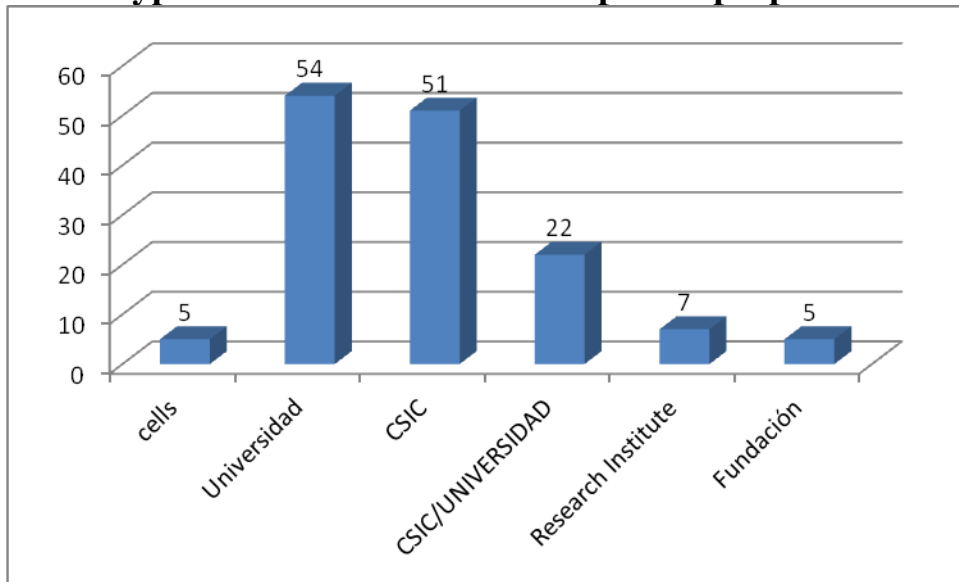
Picture 3.

Proposals by CC.AA. of the main proposer home institution (only for Spanish proposals)



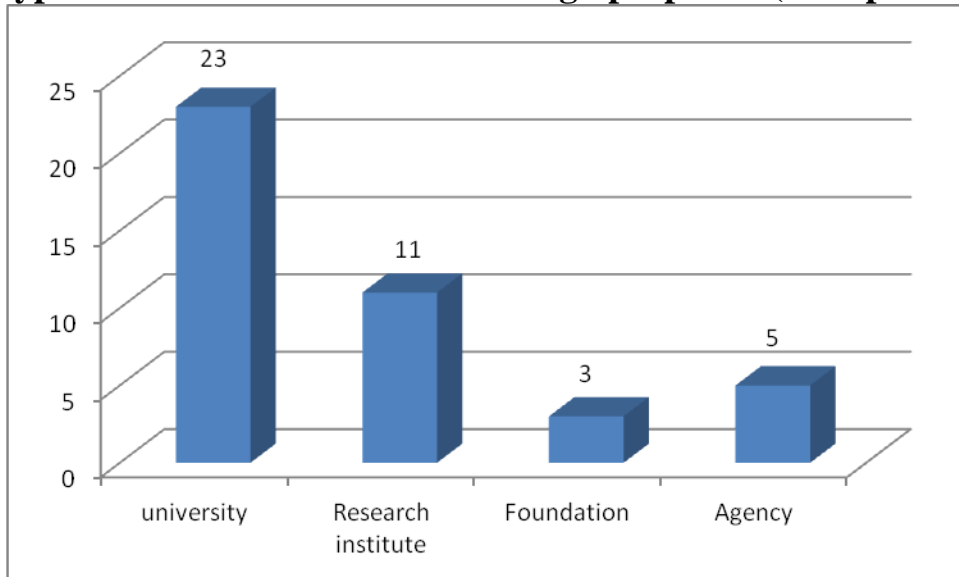
Picture 4.

Type of Home Institution for Spanish proposals



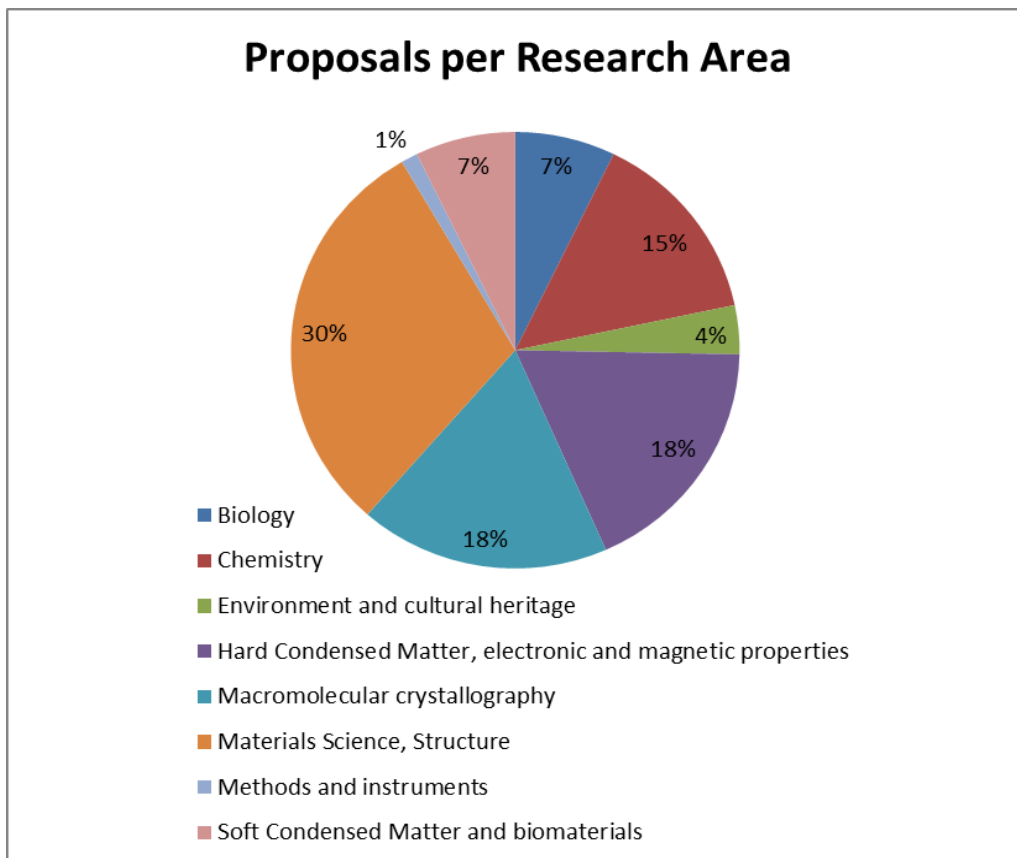
Picture 5.

Type of Home Institutions for Foreign proposals (not Spanish)



Picture 6.

4. Proposals by Research Area



Picture 7.